

# DAPCC Emergency Response Plan



# What to do in case of emergency Earthquake

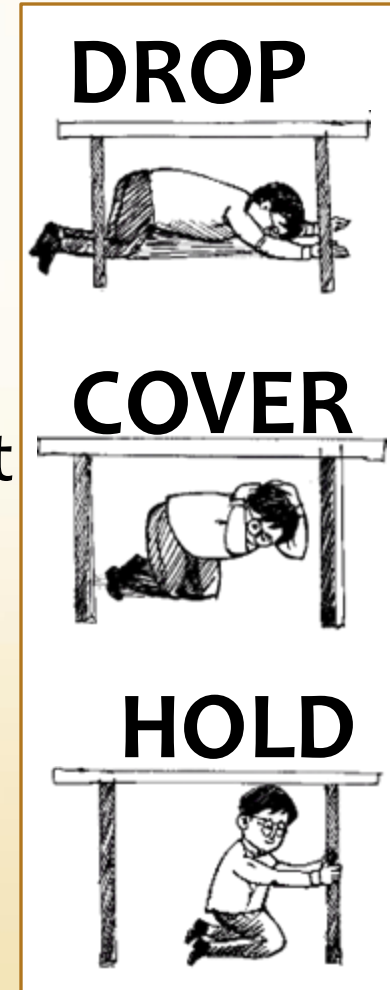
**Sources:**

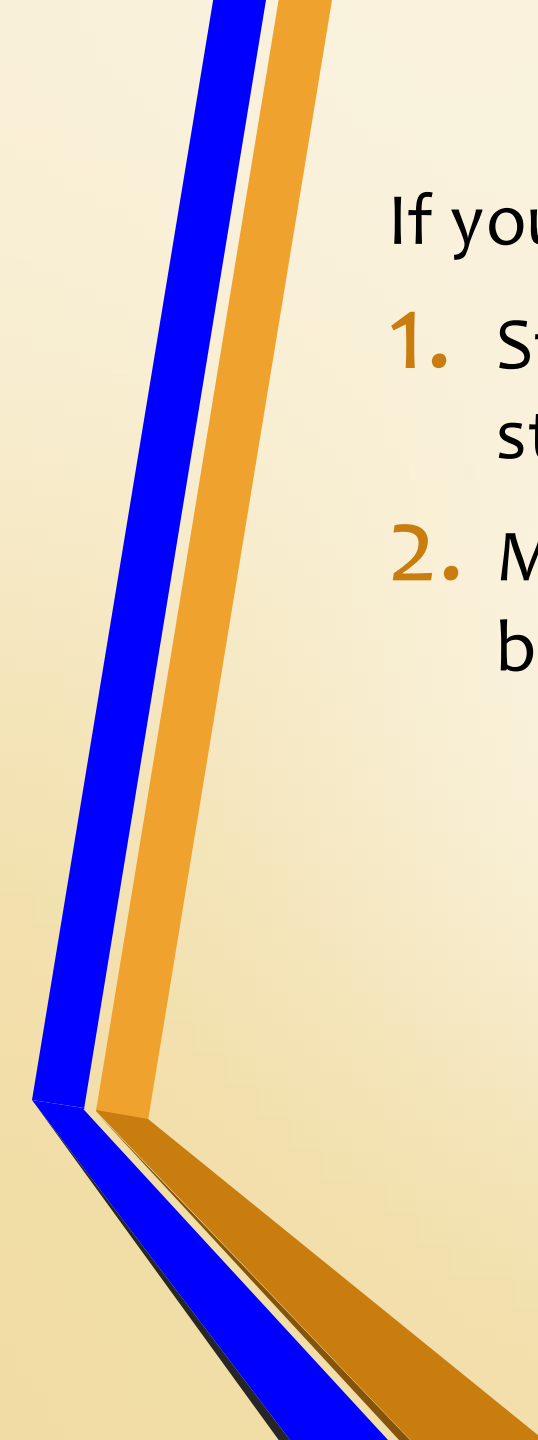
**Philippine Institute of Volcanology and Seismology**

**Singapore Civil Defence Force**

# If you feel the shaking and you are inside a building...

1. Stay away from glass windows, shelves, cabinets and other heavy objects;
2. Protect your body from falling debris by bracing yourself in the doorway; or
3. Duck under a sturdy table and hold on to it until the shaking is over;
4. If there is a need to leave the building after the shaking stops leave in an orderly manner.





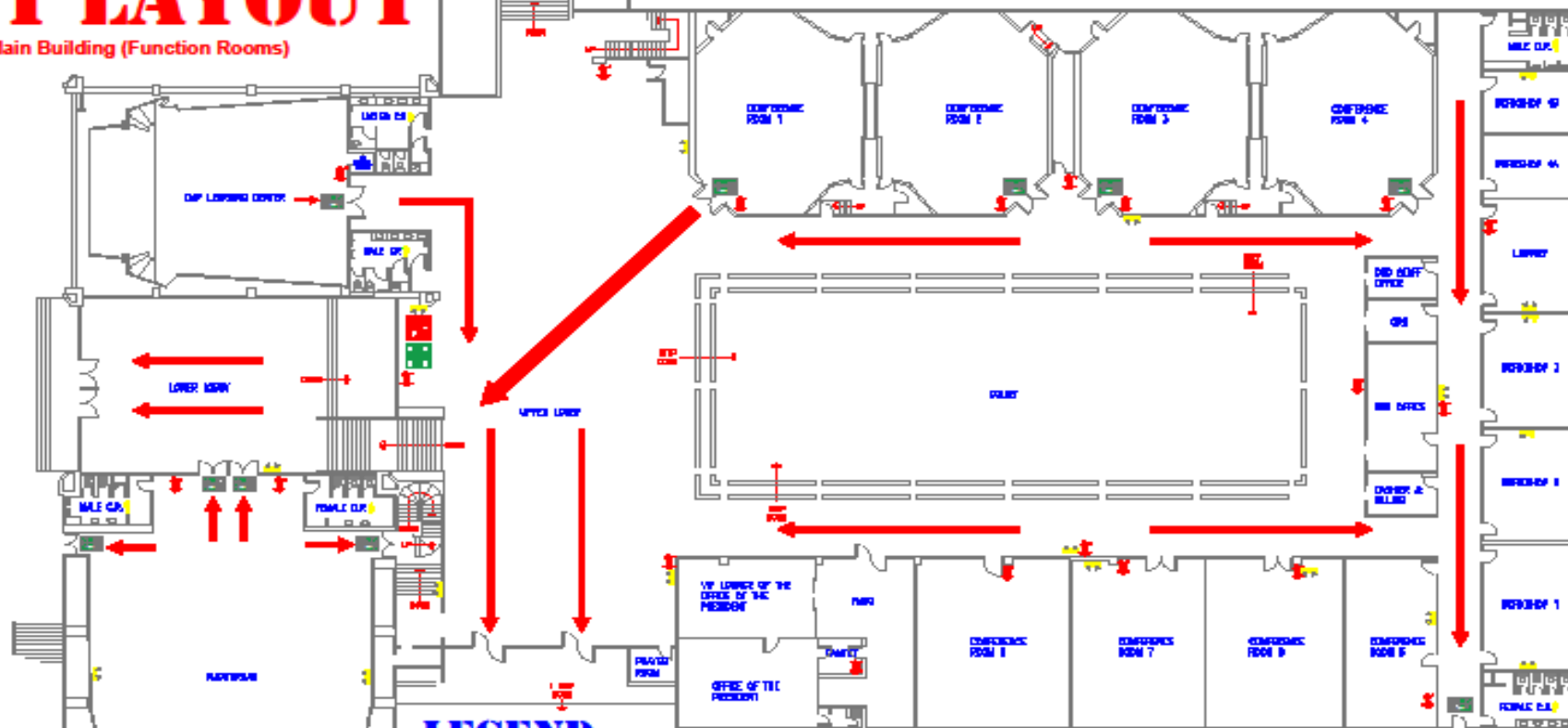
If you are outside, move to an open area...

1. Stay away from trees, power lines, posts and concrete structures that may fall or collapse;
2. Move away from steep slopes which may be affected by landslides.

# EMERGENCY EXIT LAYOUT

Main Building (Function Rooms)

development academy of the philippines



## LEGEND:

- 

Fire Extinguisher
- 

Fire Hose
- 

Fire Alarm Control Panel
- 

Manual Call Point
- 

Emergency Exit
- 

First Aid
- 

Emergency Food Supply
- 

Emergency Tools
- 

Emergency Light

**DAPCC EMERGENCY DISASTER RESPONSE PLAN - TAAL VOLCANO ERUPTION SCENARIO**  
**(For Client Reference)**

The DAPCC Emergency Disaster Response Plan, specific to the threat of Taal Volcano Eruption, describes the five (5) Scenarios and the corresponding activities/ actions that DAPCC will do. This response plan has been updated and improved given the recent experience of the Taal Volcano eruption last January 12, 2021.

Since Taal Volcano is classified as an active volcano by PHILVOCS threat of a major eruption is there. Mitigation of the risks involved is the focus of this Emergency Disaster Response Plan.

<b>Scenario</b>	<b>PHILVOCS Criteria Description</b>	<b>DAP Conference Center Activities</b>
#1 Taal Volcano - PHILVOCS Alert Level 0	<i>Background, quiet</i>	<ul style="list-style-type: none"> <li>The center accepts client and have regular operation.</li> <li>Implementation of periodic emergency response training and drills.</li> </ul>
#2 Taal Volcano - PHILVOCS Alert Level 1	<i>Low level seismicity, fumarolic, other activity</i>	<ul style="list-style-type: none"> <li>The center accepts client and have regular operation.</li> <li>Implementation of periodic emergency response training, and drills.</li> <li>Monitoring of Taal Volcano updates by DOST PHILVOCS, PAGASA (weather), DENR Mines &amp; GeoSciences Bureau (MGB) (landslide) and Tagaytay CDRRMO.</li> </ul>
#3 Taal Volcano - PHILVOCS Alert Level 2	<i>Low to moderate level of seismicity, persistence of local but unfelt earthquakes. Ground deformation measurements above baseline levels. Increased water and/or ground probe</i>	<ul style="list-style-type: none"> <li>The center accepts client and have regular operation.</li> <li>Implementation of periodic emergency response training, and drills.</li> <li>Monitoring of Taal Volcano updates by DOST PHILVOCS, PAGASA (weather), DENR Mines &amp; GeoSciences Bureau (MGB) (landslide) and Tagaytay CDRRMO.</li> <li>Practice and review Emergency Protocols: ERT ACTIVATION; LOCKDOWN PROTOCOL; EXIT-EVACUATION PROTOCOL.</li> </ul>

Scenario	PHILVOCS Criteria Description	DAP Conference Center Activities
	<i>hole temperatures, increased bubbling at Crater Lake.</i>	<ul style="list-style-type: none"> <li>All emergency equipment and supplies will be checked and readied.</li> </ul>
#4 Taal Volcano - PHILVOCS Alert Level 3	<i>Relatively high unrest manifested by seismic swarms including increasing occurrence of low frequency earthquakes and/or harmonic tremor (some events felt). Sudden or increasing changes in temperature or bubbling activity or radon gas emission or crater lake pH. Bulging of the edifice and fissuring may accompany seismicity.</i>	<ul style="list-style-type: none"> <li>Once Alert Level 3 is declared by PHILVOCS; <ul style="list-style-type: none"> <li>a) DAPCC <b>ERT will be ACTIVATED</b>. Their will be 24/7 monitoring and emergency situation management (eg. crowd control). Active coordination with the DAP Headquarters (ERT &amp; Top Management) will happen.</li> <li>b) All guests will be given an option to voluntarily leave the center or stay. Guests who will use their personal vehicles to evacuate will be given road network options to take. A vehicle of DAPCC will transport other guests to DAP Headquarters in Pasig City or any drop-off point within Ortigas, Pasig. A vehicle from DAP Pasig will pick-up these guests' mid-point (eg. Alabang) to enable the DAPCC vehicle to return back to Tagaytay as soon as possible.</li> <li>c) <b>The center will not accept any new guests.</b></li> </ul> </li> <li>If ashfall has reached Tagaytay and started to fall, the following will be implemented: <ul style="list-style-type: none"> <li>a) Guests that would like to leave the center using their own vehicle will not be allowed (there will be higher risk of accident on the road).</li> <li>b) Guests will be asked to stay inside their guest rooms. Doors and windows will be closed.</li> <li>c) Airconditioning unit will not be opened until such time when the Incident Commander cleared its use.</li> <li>d) Face masks and bottled water will be issued to all guests and staff.</li> <li>e) Packed food will be delivered to each room.</li> </ul> </li> <li>Should there be power outage, central electric generator will be activated.</li> <li>Drawing of water from the deep-well will be suspended until such time when the intensity of ground shaking reduces.</li> </ul>

Scenario	PHILVOCS Criteria Description	DAP Conference Center Activities
		<ul style="list-style-type: none"> <li>The center will be able to support guests inside the center for a period, with basic food, water, and electricity (diesel) for immediate sustenance.</li> <li>If ground shaking and/or ash fall seizes, a thorough inspection of the building will be done. Assessment report will be given to the DAP Top Management.</li> </ul>
#5 Taal Volcano - PHILVOCS Alert Level 4 & 5	<p><i>Intense unrest, continuing seismic swarms, including harmonic tremor and/or “low frequency earthquakes” which are usually felt, profuse steaming along existing and perhaps new vents and fissures.</i></p> <p>Major eruption threat is imminent but situation is otherwise stable.</p>	<ul style="list-style-type: none"> <li>Monitor PHILVOCS and LGU advisory for possible voluntary or forced evacuation of its constituents.</li> <li>If <b>VOLUNTARY EVACUATION</b> is issued, the <b>LOCKDOWN PROTOCOL</b> will be enforced.</li> <li>If <b>FORCED EVACUATION</b> is issued, the <b>EXIT-EVACUATION PROTOCOL</b> will be enforced.</li> </ul>
	<p><i>Base surges accompanied by eruption columns or lava fountaining or lava flows.</i></p>	